

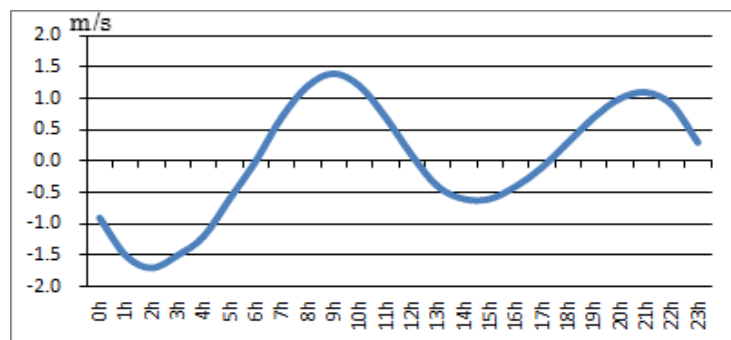
# 浜名湖今切口付近の強い流れに注意!

浜名湖今切口 10月 1日～ 10月15日の潮流推算値です。

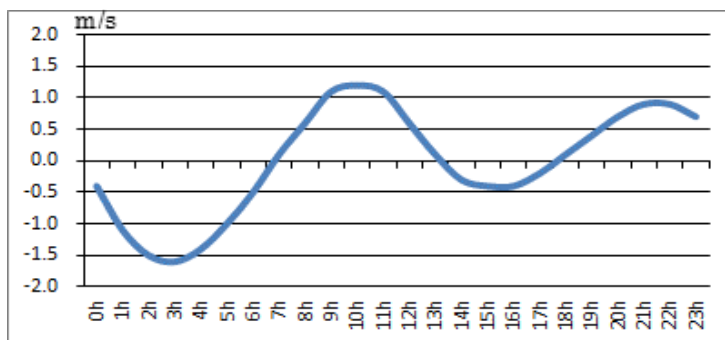
推算地ですので、実際と異なる可能性がありますのでご注意ください。

単位は m/sec で、(+)は海から浜名湖に向かう流れ、(-)は浜名湖から海に向かう流れです。

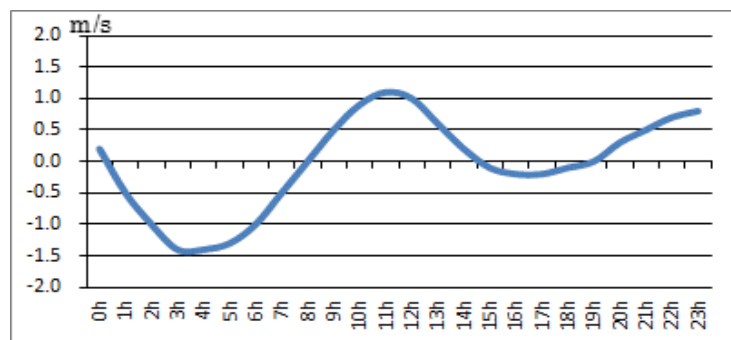
2018.10. 1



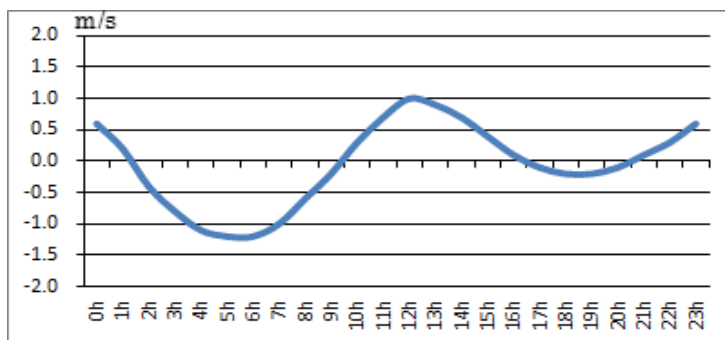
2018.10. 2



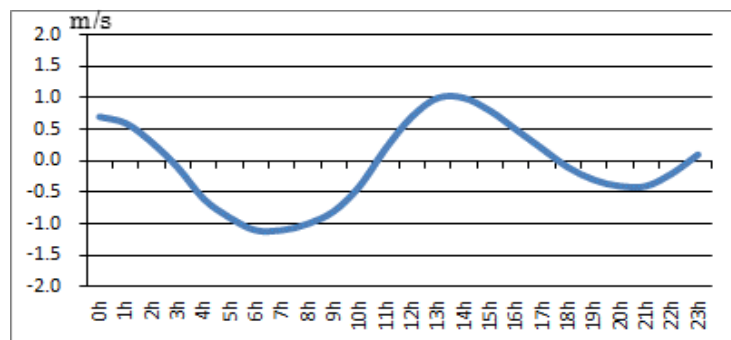
2018.10. 3



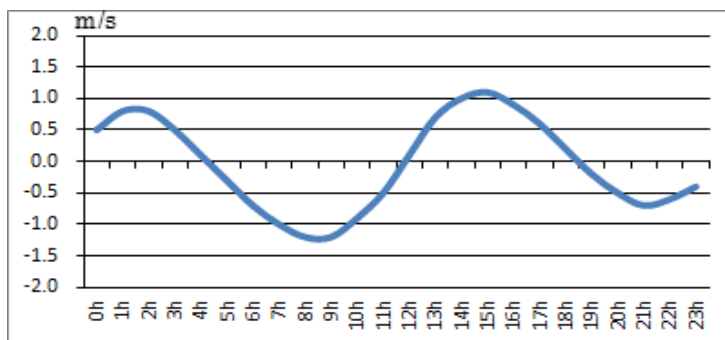
2018.10. 4



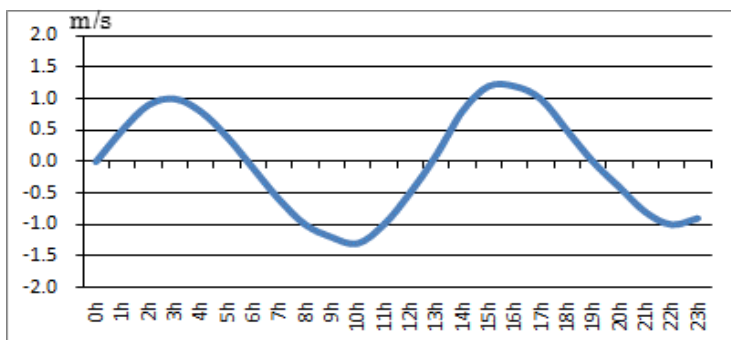
2018.10. 5



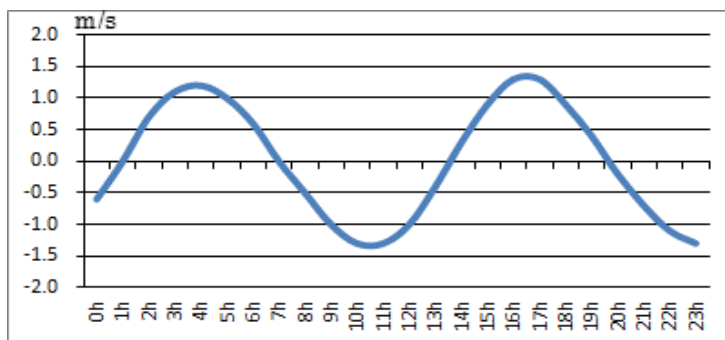
2018.10. 6



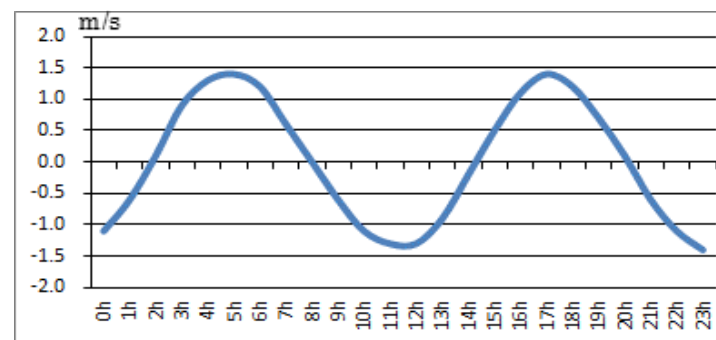
2018.10. 7



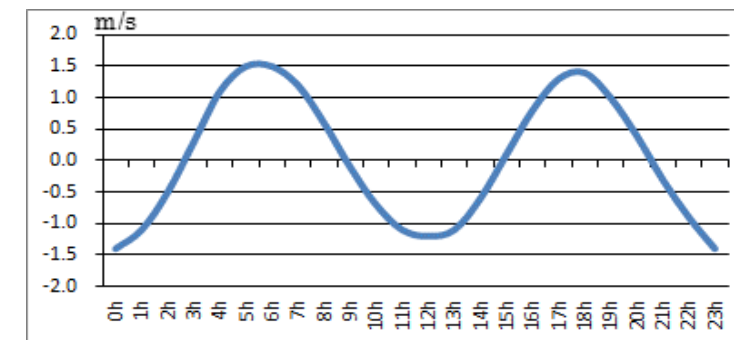
2018.10. 8



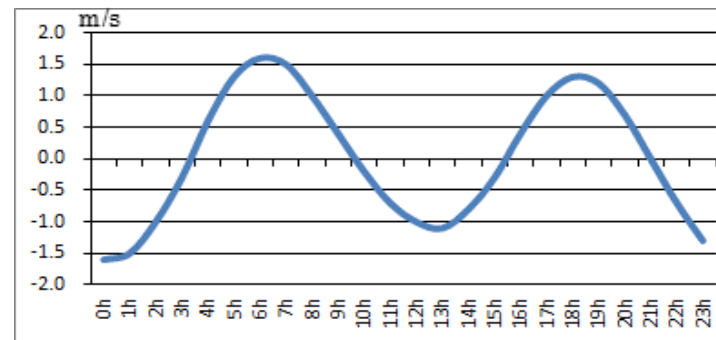
2018.10. 9



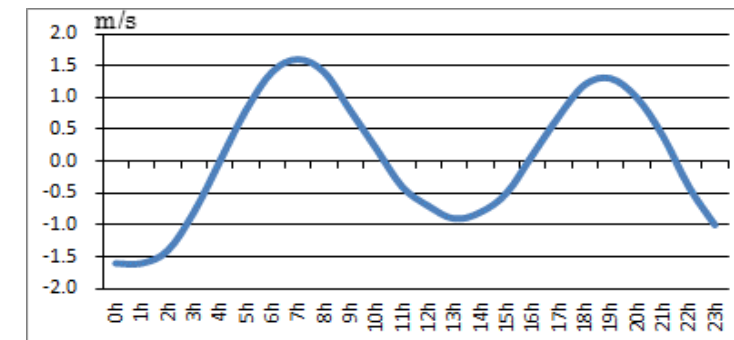
2018.10.10



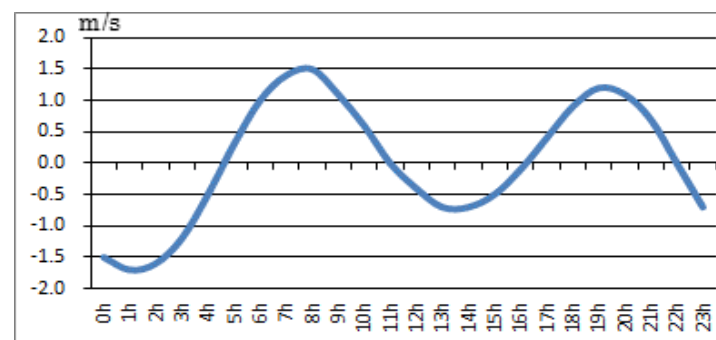
2018.10.11



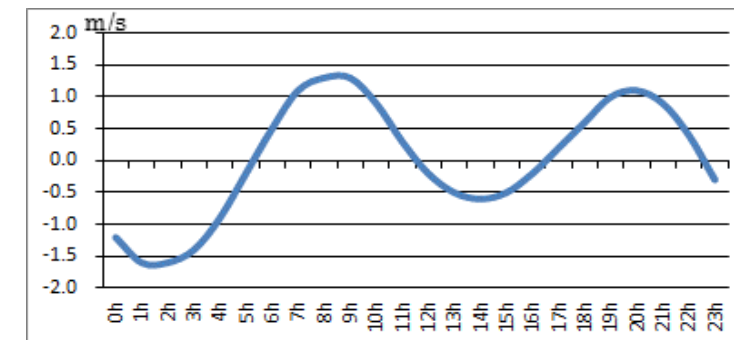
2018.10.12



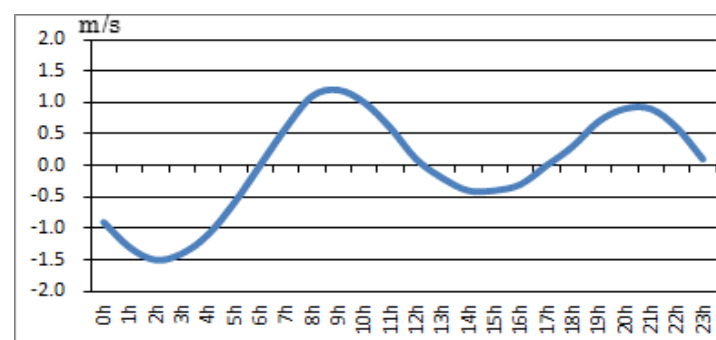
2018.10.13



2018.10.14



2018.10.15



問合せ先



(一財) 日本水路協会 〒144-0041 東京都大田区羽田空港 1-6-6

TEL 03-5708-7135 FAX 03-5708-7075 <http://www.jha.or.jp>

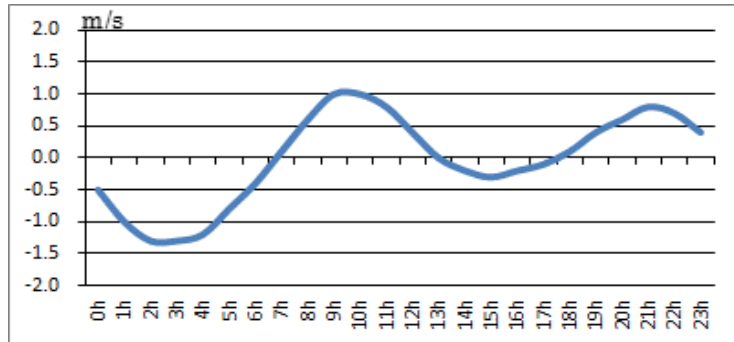
# 浜名湖今切口付近の強い流れに注意!

浜名湖今切口10月16日～10月31日の潮流推算値です。

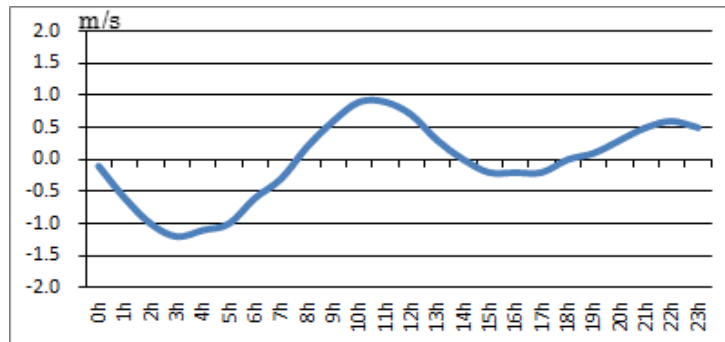
推算地ですので、実際と異なる可能性がありますのでご注意ください。

単位は m/sec で、(+)は海から浜名湖に向かう流れ、(-)は浜名湖から海に向かう流れです。

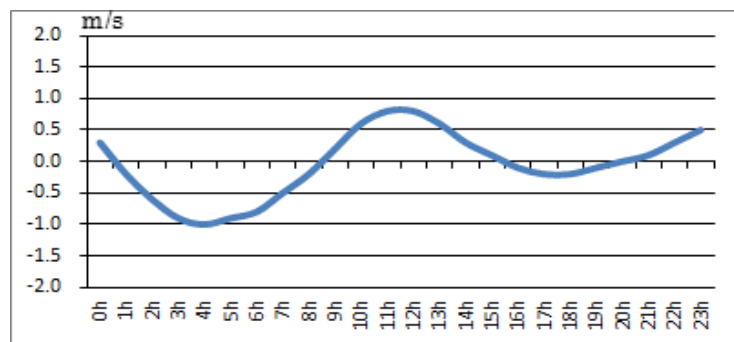
2018.10.16



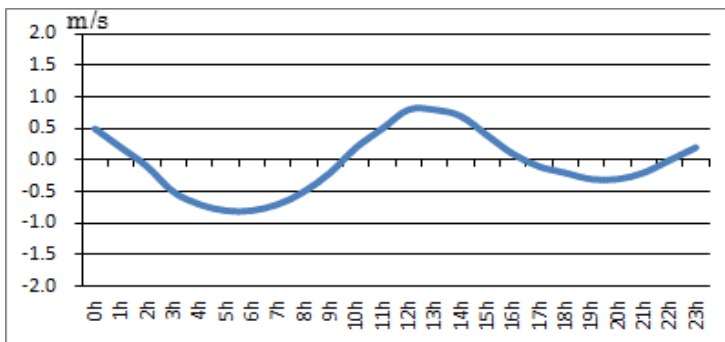
2018.10.17



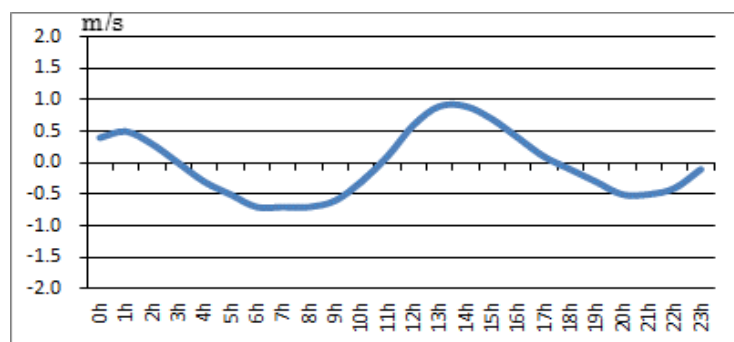
2018.10.18



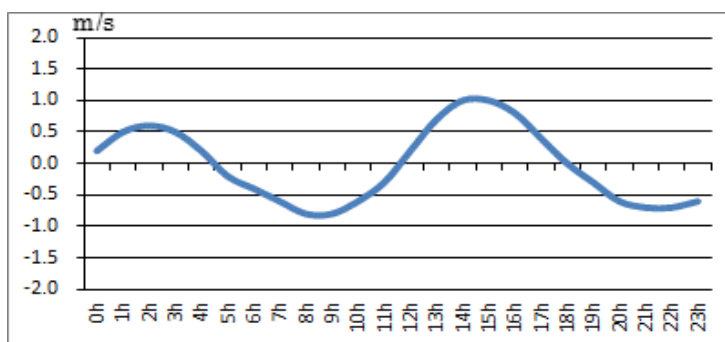
2018.10.19



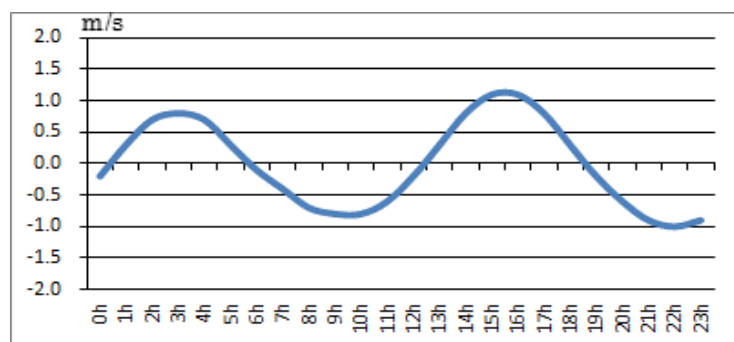
2018.10.20



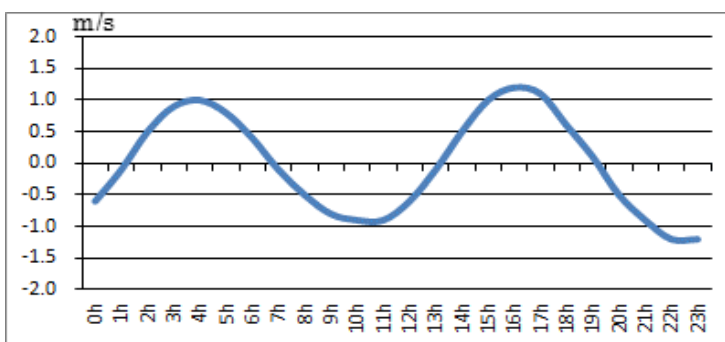
2018.10.21



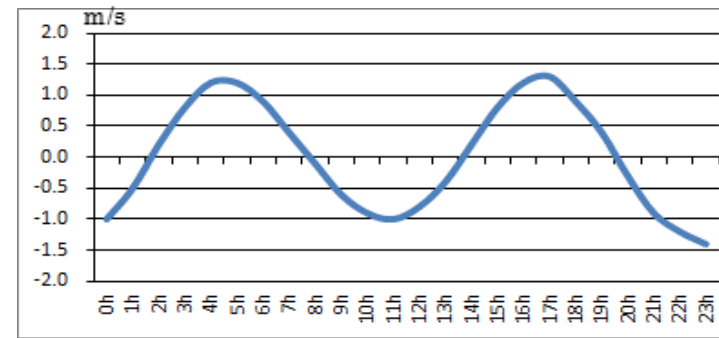
2018.10.22



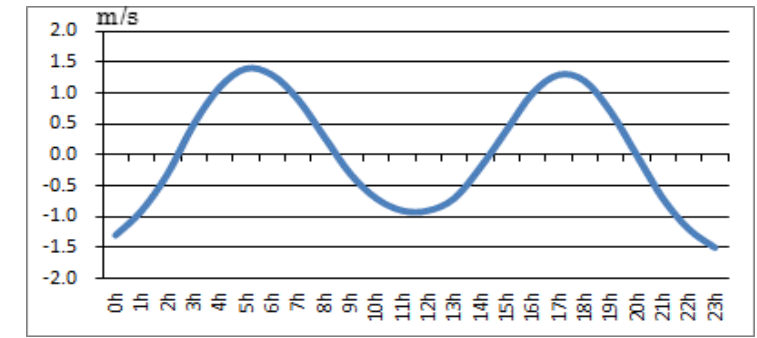
2018.10.23



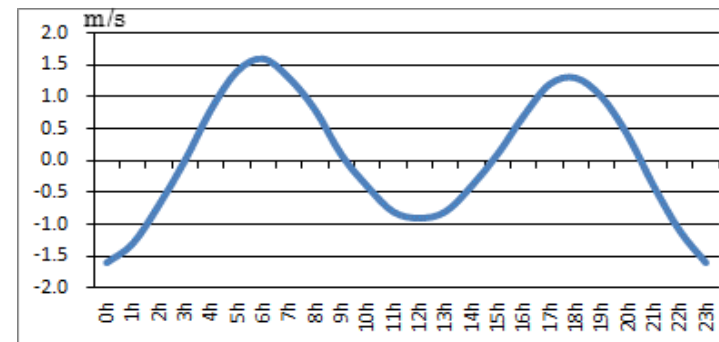
2018.10.24



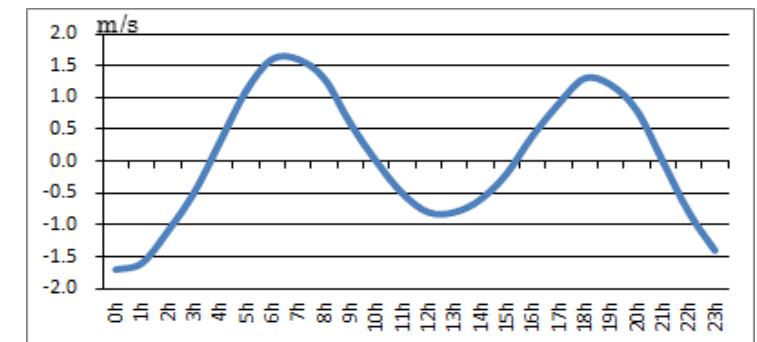
2018.10.25



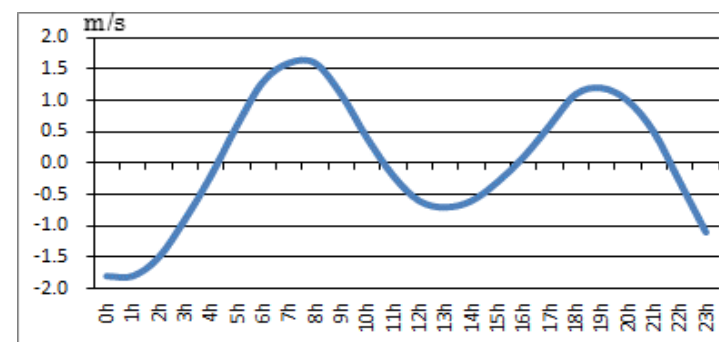
2018.10.26



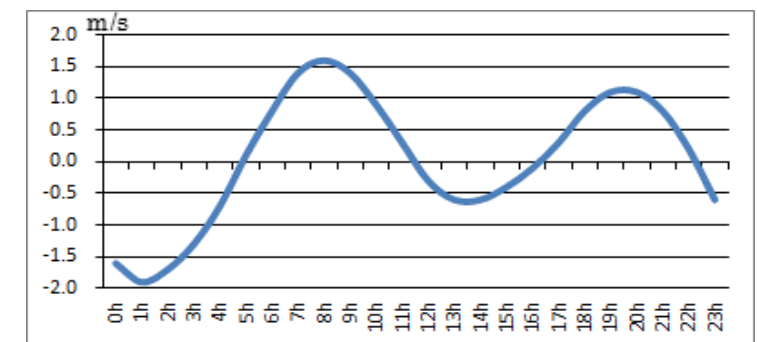
2018.10.27



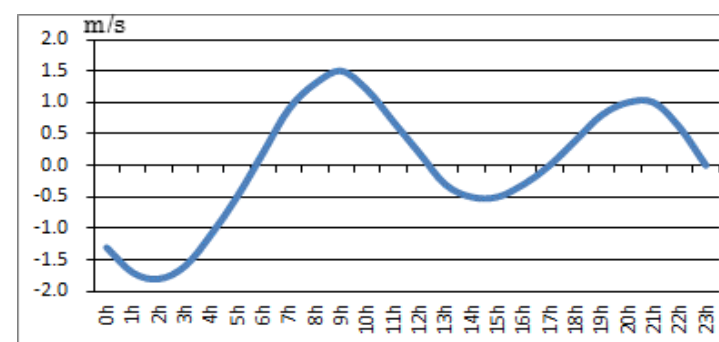
2018.10.28



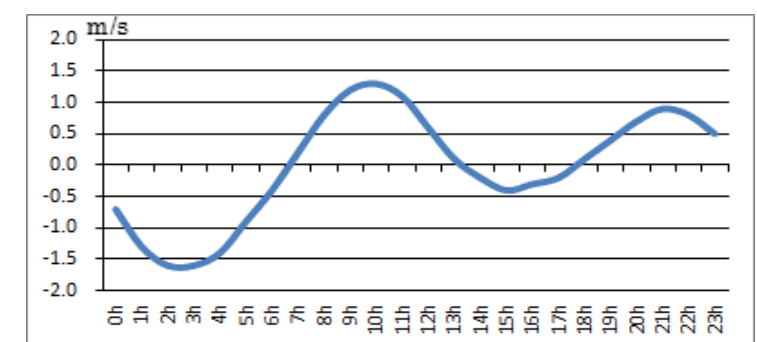
2018.10.29



2018.10.30



2018.10.31



問合せ先



(一財) 日本水路協会 〒144-0041 東京都大田区羽田空港 1-6-6

TEL 03-5708-7135 FAX 03-5708-7075 <http://www.jha.or.jp>